

## General Description:

The FHM series Multimeter combines a power meter with a 3- wavelength laser source, for optical fiber network installation and maintenance. With the large capacity of data storage, it's very convenient for field testing and transferring the test results to PC through USB interface.

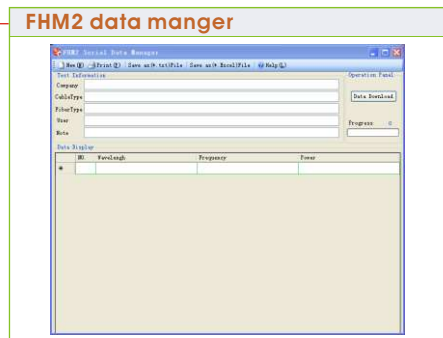
## Features:

- Auto wavelength recognition
- Data storage up to 999 items
- USB interface and PC associated software available



## Specifications:

		FHM2A02	FHM2B02
Power Meter	Calibration wavelength(nm)	850/1300/1310/1490/1550/1625	
	Connector	Interchangeable FC/SC/ST for PC/APC	
	Data storage(items)	999	
	Ref. Value	Yes	
	Display Units	dB / dBm / mW / uW	
	Display precision(dB)	0.01	
	Accuracy	± 5%±1nW	
	Wavelength Recognition	1310/1490/1550(input power≥ -40dBm)	
	Tone Detection	270 Hz / 1KHz / 2KHz(input power≥ -40dBm)	
	Measuring Range(dBm)	-70 to +10	-50 to +26
Laser Source	Output wavelength (nm)	1310/1490/1550	
	Connector	Interchangeable FC/SC/ST for PC/APC	
	Modulation frequencies	270/1K/2K Hz	
	Output Power	-5dBm±0.5dB	
	Stability Long-term(8h)	±0.1dB@1310/1550nm; ±0.2dB@1490nm	
	Stability Short-term (15min)	±0.05dB@1310/1550nm ; ±0.1dB@1490nm	
	Wavelength Recognizing Code	Yes	
General Specification	Auto Power off	✓	
	Power Supply	2pcs *NiHM 1.2V, 2000mAh; AC/DC Adaptor	
	PC interface	USB	
	Battery Life	> 100 Hours (laser off)	
	Storage Temperature	-20°C~+70°C	
	Operating Temperature	-10°C~+50°C	
	Relative Humidity	<90% (Non-condensing)	
	Dimension (mm)	168L×76W×43H	
Weight (Gram)	310		



## Ordering Information:

### Standard Accessories:

User Manual, Rechargeable Batteries, Carrying Soft Bag, Interchangeable FC/SC/ST connectors, AC /DC Power Adaptor, PC software, USB Connecting Cable

### Optional Accessories:

LC/E2000 connectors for power meter port, Aluminium Carrying Box