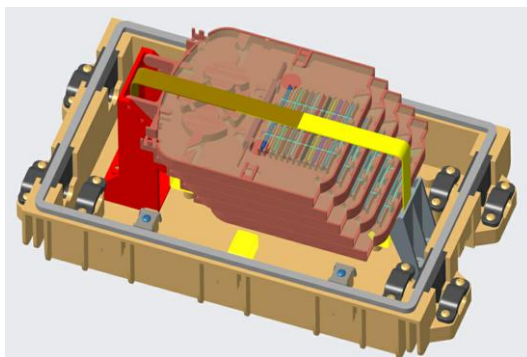
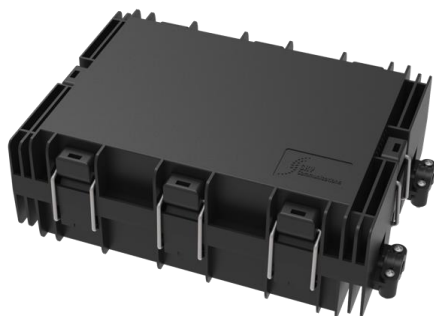


SKY Inline Closures protects splices of fibre optic cables from all forms of harsh environmental damages. The closure provides excellent cable strain relief, and has adequate space for slack buffer tube storage. It can be installed with all common cable sheaths and is suitable for aerial hanging installation.

The closure is compact and yet easily accesible. Clip lock design is ideal for multiple re-entries, enabling future expansions.



Design - Hardware	
Main cable circular port count	2
Main cable oval port count	0
Main cable range	6mm to 21mm
Central member fixing for main cable	Yes
Distribution cable range	2
Supported cables	6mm to 21mm
Maximum splice fiber capacity	72
System	ADSS cable, Figure 8 Drop Cable, ARSS cable.
Splice tray type	HS splice with PLC Splitter
Heat shrink splice protector support	Yes
Heat shrink splice count per tray	24
Support PLC splitter	Yes
Extra buffer storage system	Yes
Bulletproof housing	No
Grounding system	Yes
Aerial hanging brackets	Yes
Customer logo on housing	TRUE
Gross Weight (without fibers)	1650 gms
Dimenisions of closure (without hangers)	310 x 190 x 106 mm
Installation manual language	EN
Unit per carton	1